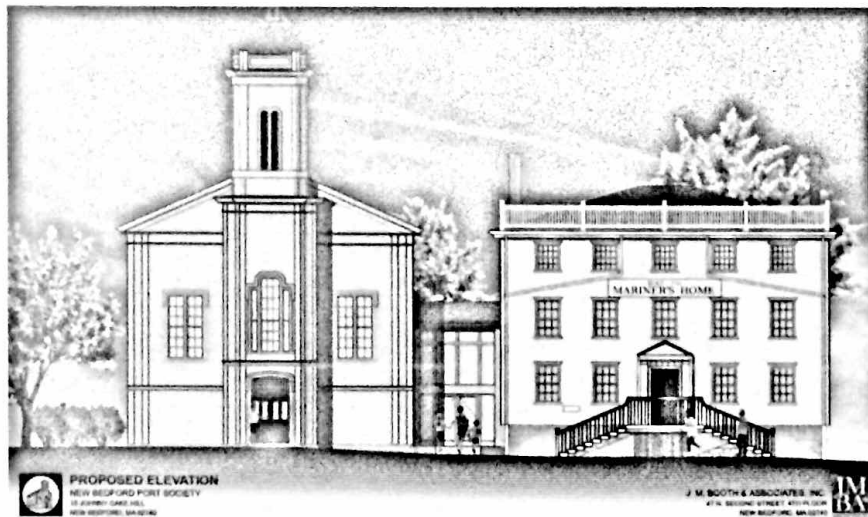


The Campaign for The Port Society Complex

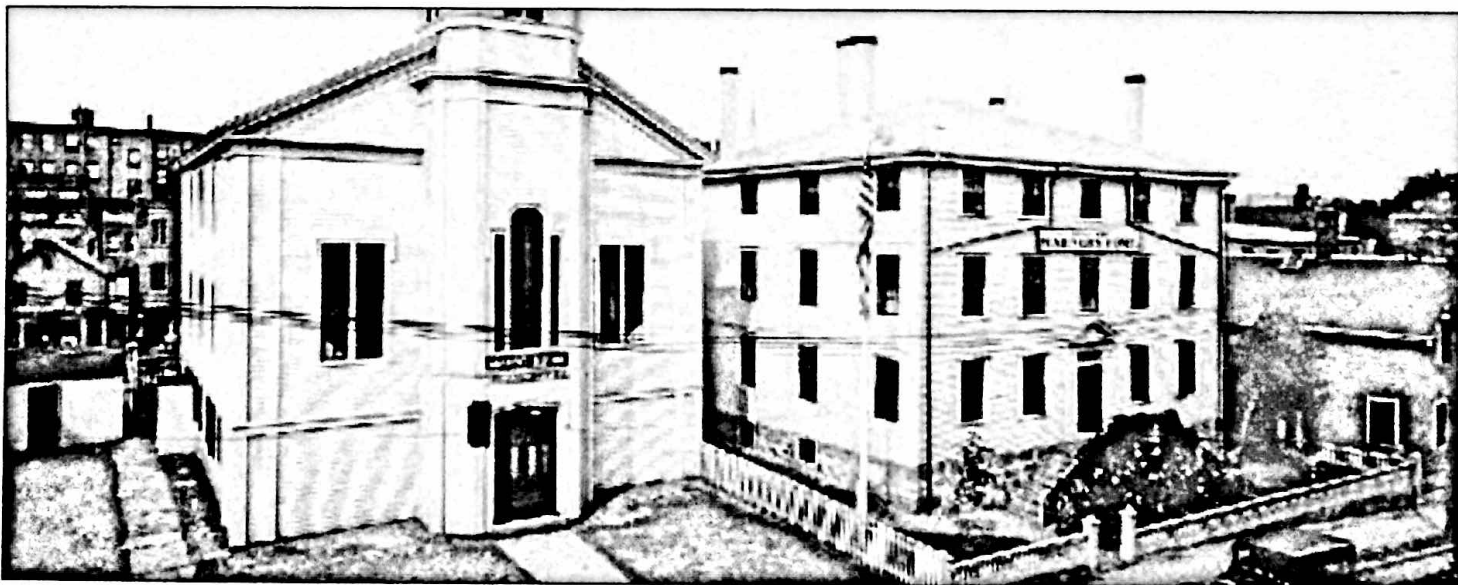
Aimed at restoring and preserving two of the city's most iconic buildings, the *New Bedford Port Society and WHALE (Waterfront Historic Area League)* have joined forces to collaborate on a bold fundraising campaign. Known as the *Campaign for the Port Society Complex*, the project's comprehensive scope envisions a complete restoration of the historic 1832 Seamen's Bethel and the adjacent 1787 Mariners Home. Both buildings grace Johnny Cake Hill in the heart of the city's nationally recognized historic district. When the restoration project is complete, both buildings will be fully handicapped accessible and connected with an enclosed walkway.

The Port Society and WHALE's plans are to open the Mariners' Home as a Fishermen's Museum to tell the story of New Bedford's development as the number one fishing port in the country and to honor the fishermen who lost their lives at sea. The 2nd and 3rd floor of the Mariners' Home will contain non-profit office space.

The Bethel will house an educational room in the Saltbox for lectures and Children's programming. The Chapel will remain a venue for weddings, funerals, memorials, and religious activities.

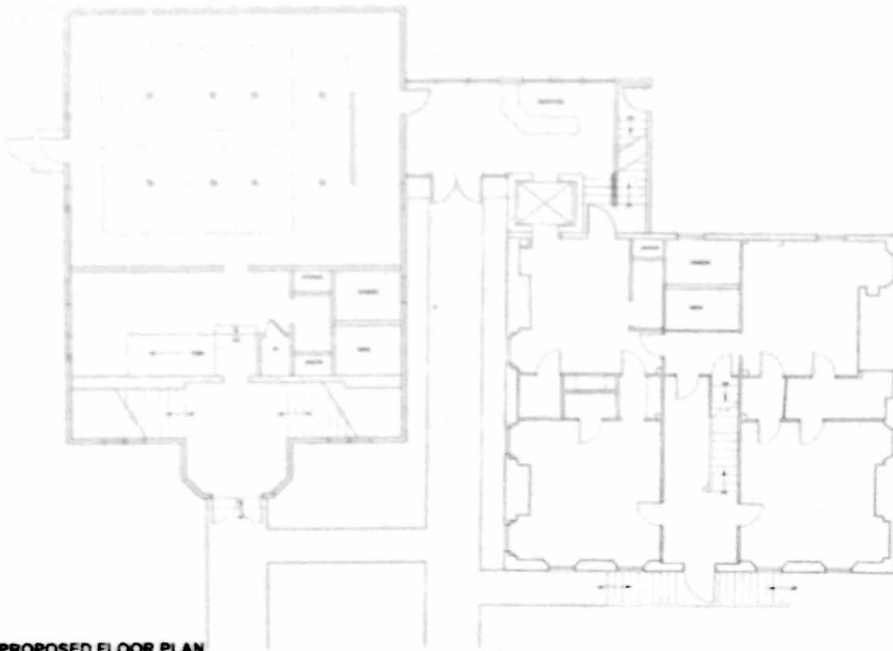


*The restoration of the
Historic Seamen's Bethel
and Mariners' Home will preserve
and make accessible two
historic treasures,
provide a venue to honor
New Bedford's fishermen,
and enhance the
Whaling National Historical Park as
a world-wide tourist destination.*



The Port Society Complex History: The historic Seamen's Bethel is the "Whalemen's Chapel" of the epic novel *Moby Dick* by Herman Melville. Inside, historic tablets or cenotaphs, chronicle the sacrifices of the maritime community, listing the names of those mariners lost at sea. Due to its association for more than 170 years with New Bedford whalemen and other sailors that "Go Down to the Sea in Ships", it has become known in the ports of every ocean on the globe.

The Mariners' Home, formerly the mansion of William Rotch Jr. was presented to the Port Society in 1851. The building was moved to Johnny Cake Hill, just north of the Bethel where it now stands. The Port Society has continually rendered aid to the spiritual and moral needs of seaman and their families.



Concept for the
First Floors of the
Port Society Complex
created by
JMBA+ Architects

PROPOSED FLOOR PLAN
NEW BEDFORD PORT SOCIETY
15 JOHNNY CAKE HILL
NEW BEDFORD, MA 02740

J. M. BOOTH & ASSOCIATES, INC.
47 N. SECOND STREET, 4TH FLOOR
NEW BEDFORD, MA 02740



The famed Chapel in the Seamen's Bethel

The Campaign for The Port Society Complex

The Progress

The Port Society has joined forces with WHALE to form a partnership to develop plans and apply for financing to obtain the necessary funding for the \$2 Million + preservation project. The Project architect is JMBA+.

The Need

The goal of the Campaign is to raise funds to match a \$500,000 state Cultural Facilities Grant that the project team will be applying for in March 2014. If we can achieve this goal, we anticipate that the remaining expenses of this \$2 million + project will be successfully financed through historic tax credits and grants.

The Opportunities

Your contribution to *The Campaign for The Port Society Complex* will be gratefully acknowledged in the new Fishermen's Museum in the form of a plaque at the following levels:

Captain:	\$25,000
Chief Mate:	\$10,000
Second Mate:	\$5,000
Third Mate:	\$2,500
Deck Cadet:	\$1,000
Boatswain:	\$ 500
Able Seaman:	\$ 100



For more information about
*The Campaign for The Port
Society Complex*, please contact:

Teri Bernert, Executive Director
Waterfront Historic Area League
128 Union Street
New Bedford, MA 02740
508-997-1776
tbernert@waterfrontleague.org

Peter Haley, Manager
New Bedford Port Society
15 Johnny Cake Hill
New Bedford, MA 02740
508-992-3295
manager@portsociety.org

The Port Society Complex is an initiative of the New Bedford Port Society and the Waterfront Historic Area League, both nonprofit 501(c)(3) organizations are located and dedicated to the City of New Bedford.



Frederick Toomey,
President



Michael Murray,
President